

emi-coat™

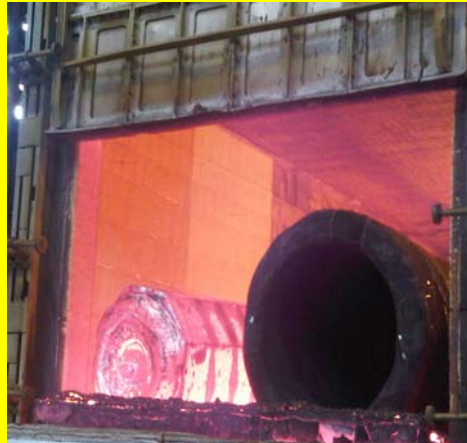
High Emissivity & Protective Coating Systems

SHEFFIELD FORGEMASTERS
INTERNATIONAL



Experienced | Global | Innovative

emi-Coat™ Energy efficient coating helps Sheffield Forgemasters cut gas costs



SFIL PRESS RELEASE - 28 October 2009

Two of Europe's largest forge furnaces at Sheffield Forge masters International (SFIL) have been fitted with emi-coat™ systems to help improve thermal efficiency and performance - saving around £300,000 a year on energy bills.

The two furnaces based in the heavy forge at Forge masters' Brightside Lane base; have been treated with Lloyd R.I.S. Group's emi-coat™ high emissivity coating systems.

The application, undertaken on two of the 20 furnaces at the site, is just one of SFIL's recognitions of its ongoing need to reduce its own carbon footprint and improve efficiency. By applying emi-coat™ high emissivity coating to the hot face of the refractory in its forge fire number seven, SFIL, a leading global force in large-scale engineering, has significantly reduced its monthly gas consumption by 7% on the largest furnace - equating to a saving of £6,000 per week or £300,000 per year.

Gareth Barker, Operations Director within the heavy forge at SFIL, who approved the application of the emi-coat™ materials, said: "Forge masters is continually striving to improve efficiency, reduce costs and recognises the need to invest in technologically advanced materials to surpass the exacting standards we demand within this environment.

Steve Lloyd, Managing Director at Emi-coat Limited said: "This is a proven energy saving system with the ability to dramatically transform the substrate to absorb and reradiate energy improving thermal efficiency and performance of the kiln or furnace. This thereby reduces energy consumption and helps to improve your carbon footprint.

Neil Clare, Sales Director at Emi-coat Limited added: "We are delighted that a world leader like Sheffield Forge masters has chosen to benefit from our system and hope to work with them on future projects at their Brightside Lane base to improve energy efficiency even further."

For further information to see how we can improve your energy efficiency please contact us below.

All energy calculations and information for the article was supplied and produced by SFIL.
Emi-Coat Limited – Chase View – Walkers Rise – Hednesford – Staffordshire – WS12 0QU
Tel: +44 (0) 1543 877977 - Fax: +44 (0) 1543 877911 - www.emi-coat.co.uk

emi-Coat™ is a trademark of the Lloyd Group of Companies.